

VIRGINIA STANDARDS OF LEARNING

Spring 2009 Released Test

GRADE 5 SCIENCE

Form S0119, CORE 1

Property of the Virginia Department of Education

©2009 by the Commonwealth of Virginia, Department of Education, P.O. Box 2120, Richmond, Virginia 23218-2120. All rights reserved. Except as permitted by law, this material may not be reproduced or used in any form or by any means, electronic or mechanical, including photocopying or recording, or by any information storage or retrieval system, without written permission from the copyright owner. Commonwealth of Virginia public school educators may reproduce any portion of these released tests for non-commercial educational purposes without requesting permission. All others should direct their written requests to the Virginia Department of Education, Division of Student Assessment and School Improvement, at the above address or by e-mail to Student_Assessment@doe.virginia.gov.

Directions

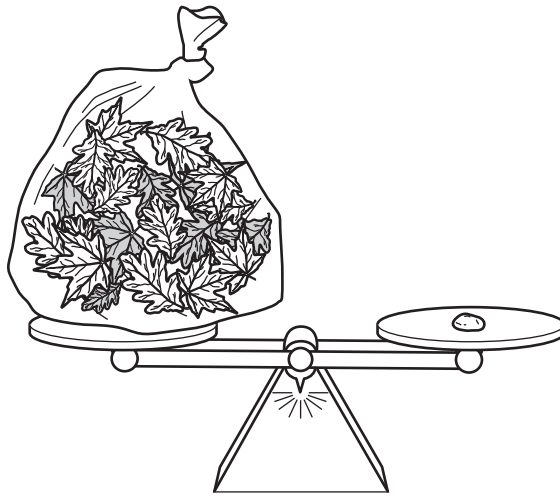
Read each question and choose the best answer.

SAMPLE

When Earth is seen from outer space, it looks mainly blue. This is because most of Earth is covered with

- A** ice
- B** mountains
- C** oceans
- D** deserts

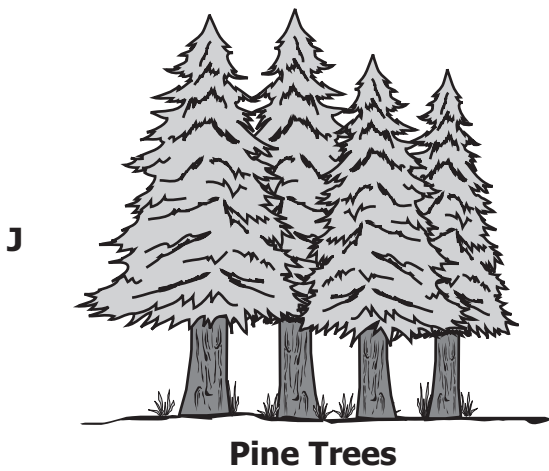
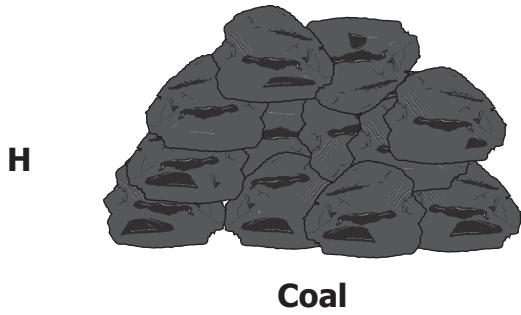
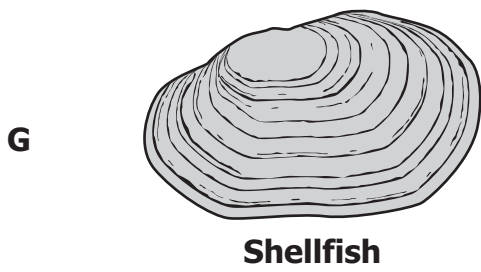
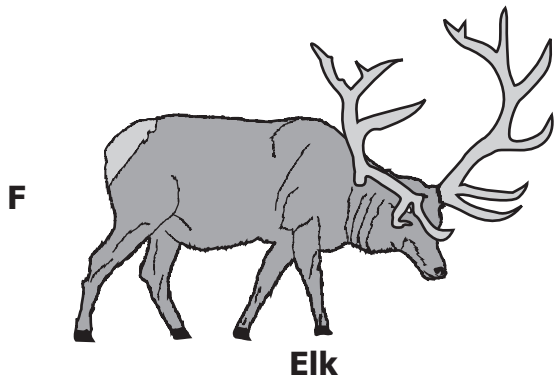
1



Based on the picture, the bag of leaves has —

- A** less mass than the pebble
- B** the same mass as the pebble
- C** the same volume as the pebble
- D** less volume than the pebble

2 Which of these is an important natural resource of the Chesapeake Bay?



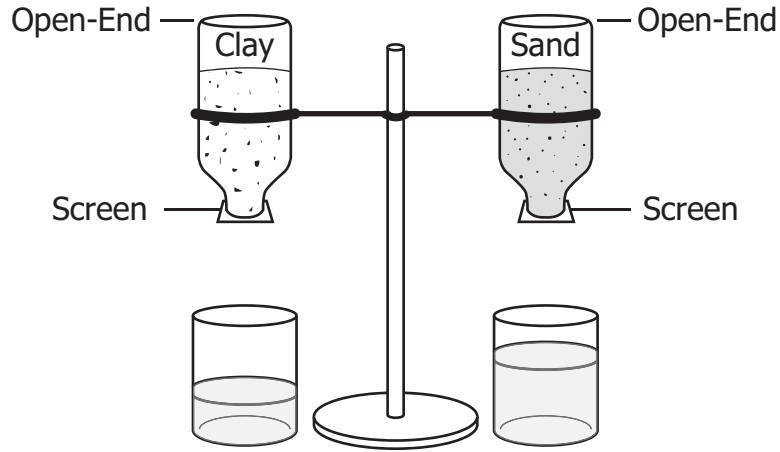
3 The Apollo 11 mission was able to retrieve samples of the Moon's surface because it was the first mission to have astronauts —

- A** land on the Moon
- B** orbit a planet
- C** return to Earth
- D** walk in space

4 When ice cream is left out of a freezer, the ice cream changes from a —

- F** solid to a gas
- G** gas to a liquid
- H** solid to a liquid
- J** liquid to a gas

5

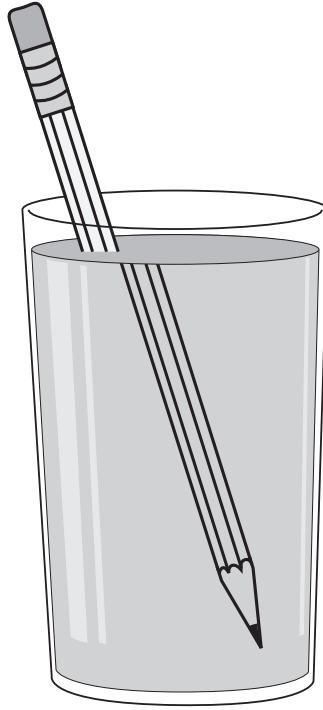


Students want to learn which of two soils holds more water. They put clay in one bottle and sand in the other. Then they put equal amounts of water in the bottles. Some of the water drained into beakers. Which of these is the manipulated, independent variable?

- A Type of soil
- B Type of beaker
- C Amount of water
- D Number of bottles

6 Which of these correctly shows what happens when two magnets are placed side by side?





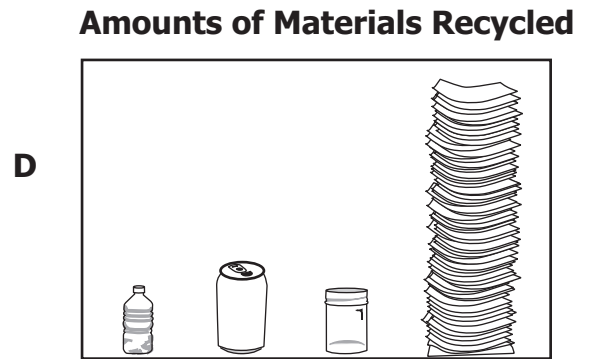
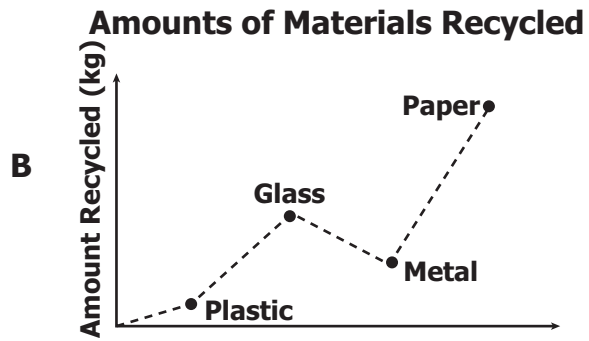
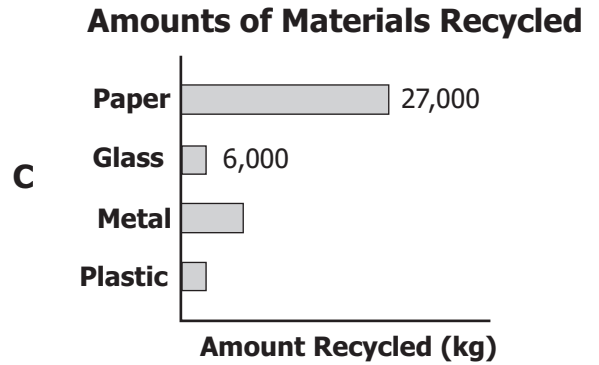
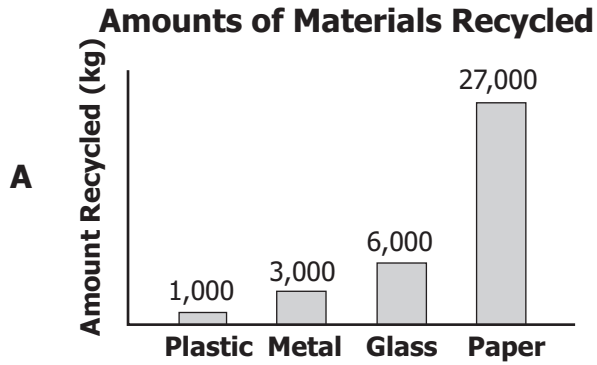
Students place a pencil in a glass of water as shown. The pencil in the water looks broken because —

- A** water can dissolve pencils
- B** water is colder than air
- C** light bends when it enters the water
- D** light is absorbed when it hits the glass

8 Which of these *best* describes the Moon?

- F** Older than Earth
- G** Smaller than Earth
- H** Having the same climate as Earth
- J** Having the same atmosphere as Earth

- 9 A student is writing a report on recycling. The student learns that different kinds of material are recycled in different amounts. Which graph *best* shows the data?



10 A student is hiking through a forest taking pictures for science class. Which picture would *most* likely be used as an example of human impact on Earth?

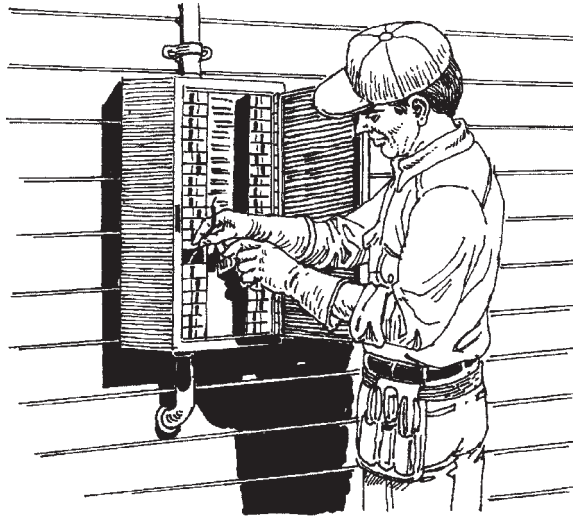
- F** A trail built by cutting down trees
- G** A river eroding away the riverbank
- H** A bird nest made of dead branches
- J** A group of butterflies landing on flowers

11 Which structure surrounds and protects an animal cell?

- A** Nucleus
- B** Vacuole
- C** Cytoplasm
- D** Cell membrane

12 What kind of energy do all moving objects have?

- F** Light energy
- G** Solar energy
- H** Kinetic energy
- J** Renewable energy

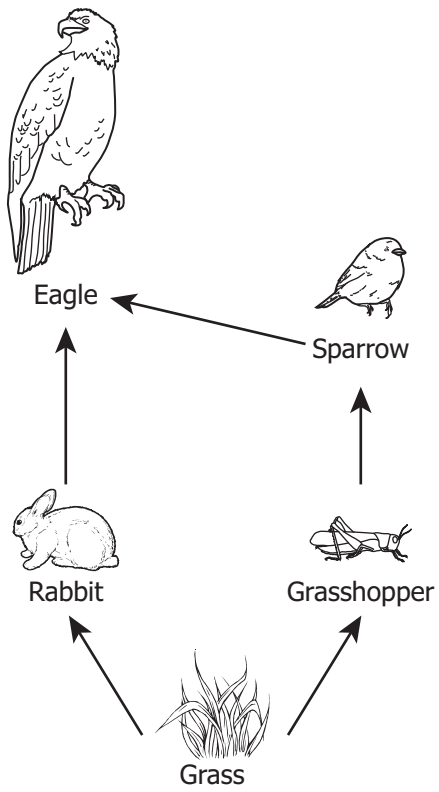


The electrician in this picture is wearing rubber gloves for protection. The purpose of the rubber gloves is to —

- A** keep the electrician dry
- B** create an electrical circuit
- C** produce electricity
- D** insulate the electrician

14 The top layers of soil are important because they —

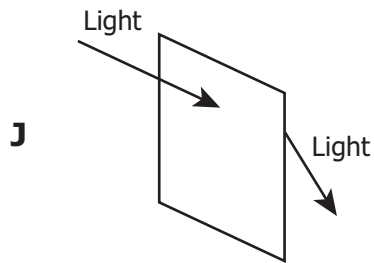
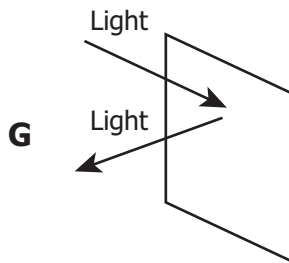
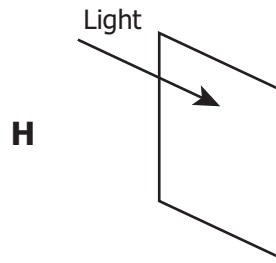
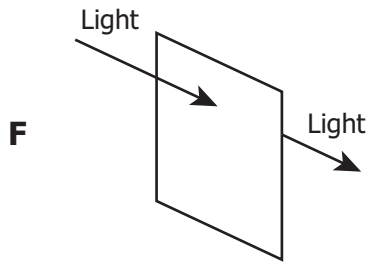
- F** prevent earthquakes
- G** give plants nutrients
- H** protect the bedrock
- J** make walking easier

Food Web

Based on the food web, which of these is a producer?

- A** Eagle
- B** Grass
- C** Rabbit
- D** Sparrow

16 Which of these correctly shows how light acts when it hits a mirror?



17 In winter, the arctic fox has white fur. In summer, its fur changes color to brown and gray. The change in fur color helps the arctic fox to —

- A** run
- B** mate
- C** hide
- D** hibernate

- 18** A student makes a fruit drink by stirring a powdered mix into cold water. Why is the fruit drink a solution?
- F** The powder dissolves in the water.
 - G** The water changes color.
 - H** The student stirs the water.
 - J** The water is the proper temperature.

19



Which unit is *best* to use for measuring the width of oak tree leaves?

- A** Centimeter
- B** Gram
- C** Kilometer
- D** Milliliter

20 At which location are oceans the deepest?

- F** Mid-ocean ridge
- G** Abyssal plain
- H** Ocean trench
- J** Volcanic island

21 Which of these is *most* likely harmful to an ecosystem?

- A** Building new homes in a wetland
- B** Taking away airplanes from an airport
- C** Planting trees in an orchard
- D** Adding floors to an office building

22 Which of these describes rotation?

- F** Mercury goes around the Sun every 88 days.
- G** The Moon goes around Earth every 28 days.
- H** Earth orbits the Sun about every 365 days.
- J** Earth makes one turn on its axis every 24 hours.

23 When a tree is dormant, the tree is

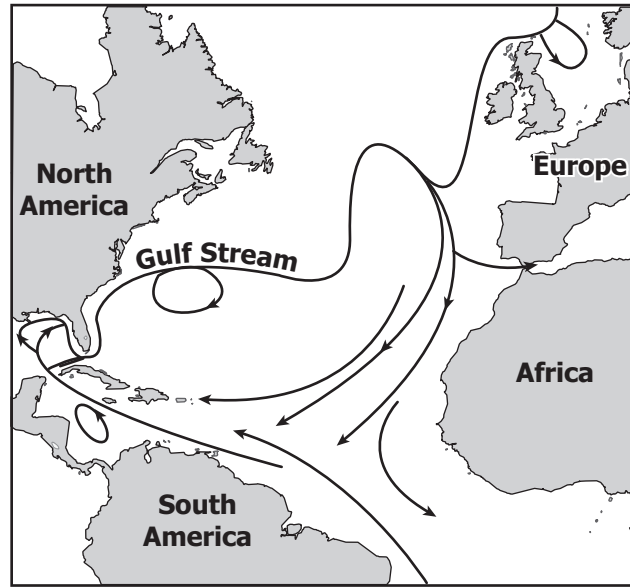
- A** dying
- B** inactive
- C** growing taller
- D** growing its leaves

24 Which type of storm causes the *most* flooding in areas located near an ocean coastline?

- F** Tornado
- G** Hurricane
- H** Blizzard
- J** Freezing rain

25 Granite is a hard material and forms from cooling magma. Granite is a type of —

- A** lava stone
- B** igneous rock
- C** volcanic dust
- D** sedimentary rock



What do the arrows on the map represent?

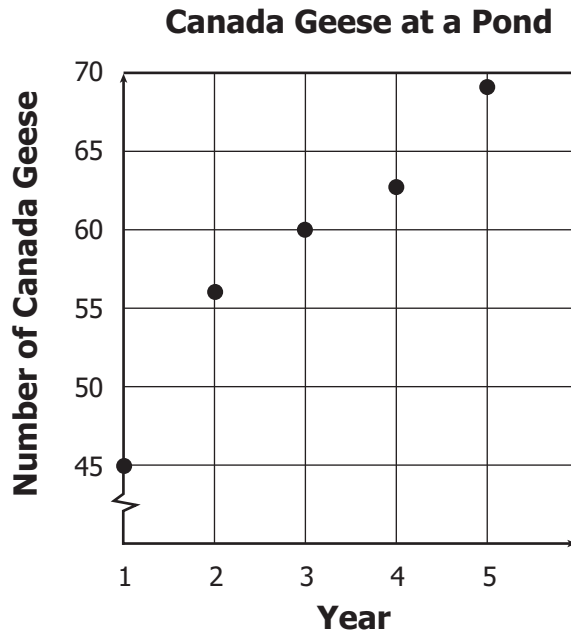
- F** Size of waves
- G** Water density
- H** Ocean currents
- J** Time between tides

27 A student rolls a ball on the ground. Which of these causes the ball to slow down and then stop?

- A** The motion of the ball
- B** The speed of the ball
- C** Friction from the ground
- D** A magnetic field

28 Which of the following do plants need to make their own food?

- F** Flowers
- G** Bacteria
- H** Sunlight
- J** Oxygen



A student counted the number of Canada geese that have lived on a pond for the past five years. Based on the graph, how many geese will probably live on the pond in year 6?

- A** 60
- B** 65
- C** 70
- D** 75






30 Which of these objects is translucent?

- F** A student's notebook
- G** A mirror on the bus
- H** A brick wall of the school
- J** A student's sunglass lenses

31 The presence of an animal fossil in a rock gives evidence of —

- A** what hunting behaviors the animal used
- B** how many babies the animal had
- C** exactly when the animal was born
- D** the time period the animal lived in

32 A boy placed four leaves in a caterpillar’s cage.

Monday	Tuesday	Wednesday	Thursday	Friday
				

He observed the number of leaves in the caterpillar’s cage each day. Based on the data, the boy should infer that the caterpillar —

- F** is eating only every other day
- G** is eating each day
- H** will eat part of one leaf next Monday
- J** will stop eating during molting on Friday

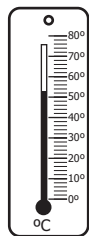
33 What tool is used to determine the mass of an object?

- A** Balance
- B** Meter stick
- C** Thermometer
- D** Graduated cylinder

34 Which part of a sunflower plant absorbs water and nutrients?

- F** Roots
- G** Stems
- H** Leaves
- J** Flowers

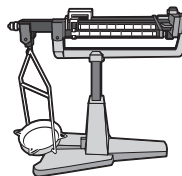
35



Thermometer



Centimeter ruler



Pan balance

Month						
Sunday	Monday	Tuesday	Wednesday	Thursday	Friday	Saturday
					1	2
3	4	5	6	7	8	9
10	11	12	13	14	15	16
17	18	19	20	21	22	23
24	25	26	27	28	29	30
31						

Calendar

Juan is doing an experiment to see how long it takes an acorn to grow into a 0.5-meter-tall oak tree. Which two instruments should he choose?

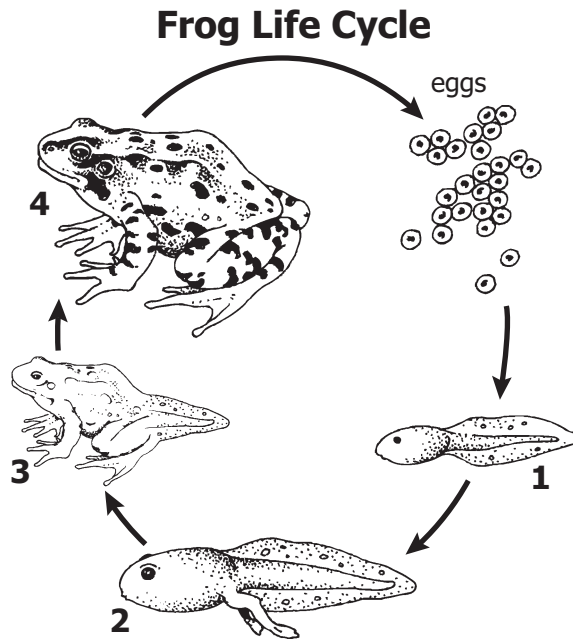
- A** Thermometer and centimeter ruler
- B** Thermometer and calendar
- C** Centimeter ruler and pan balance
- D** Centimeter ruler and calendar

36 An electric motor is designed to turn electrical energy into —

- F** solar energy
- G** potential energy
- H** static electricity
- J** mechanical energy

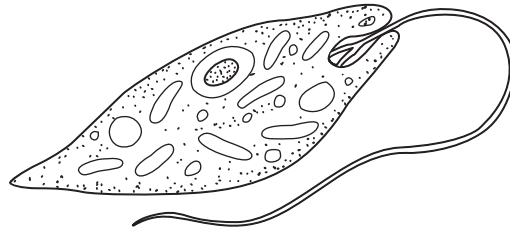
37 A group of students tested the effects of different amounts of water on ivy plant growth. Afterwards, they could not remember how much each plant grew per day. What should they have done to practice good science?

- A** Discuss their observations with other groups in their class.
- B** Conduct the experiment with more than one type of plant.
- C** Record daily information in a data table.
- D** Make up explanations for the results.



In which numbered stage of the frog's life cycle does the frog begin to use lungs to breathe air?

- F** 1
- G** 2
- H** 3
- J** 4

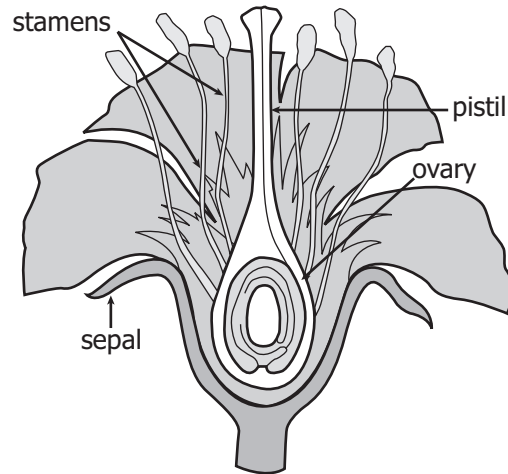


Lab: Microscopic Organisms

1 a. Has many tiny hairs Go to 2
b. Has no tiny hairs Go to 3
2 a. Has hairs all along edge <i>Paramecium</i>
b. Has hairs along one end <i>Vorticella</i>
3 a. Has one long tail <i>Euglena</i>
b. Has many arm-like shapes <i>Amoeba</i>

Lee uses a microscope during science class. He sees this organism in a drop of water. Which organism did he *most likely* see?

- A** *Paramecium*
- B** *Vorticella*
- C** *Euglena*
- D** *Amoeba*



What part of the flower produces pollen?

- F** ovary
- G** sepal
- H** pistil
- J** stamen

Answer Key-5005-S0119

Test Sequence Number	Correct Answer	Reporting Category	Reporting Category Description
1	B	001	Scientific Investigation
2	G	003	Life Processes and Living Systems
3	A	004	Earth/Space Systems and Cycles
4	H	002	Force, Motion, Energy, and Matter
5	A	001	Scientific Investigation
6	J	002	Force, Motion, Energy, and Matter
7	C	002	Force, Motion, Energy, and Matter
8	G	004	Earth/Space Systems and Cycles
9	A	001	Scientific Investigation
10	F	004	Earth/Space Systems and Cycles
11	D	003	Life Processes and Living Systems
12	H	002	Force, Motion, Energy, and Matter
13	D	002	Force, Motion, Energy, and Matter
14	G	004	Earth/Space Systems and Cycles
15	B	003	Life Processes and Living Systems
16	G	002	Force, Motion, Energy, and Matter
17	C	003	Life Processes and Living Systems
18	F	002	Force, Motion, Energy, and Matter
19	A	001	Scientific Investigation
20	H	004	Earth/Space Systems and Cycles
21	A	003	Life Processes and Living Systems
22	J	004	Earth/Space Systems and Cycles
23	B	003	Life Processes and Living Systems
24	G	004	Earth/Space Systems and Cycles
25	B	004	Earth/Space Systems and Cycles
26	H	004	Earth/Space Systems and Cycles
27	C	002	Force, Motion, Energy, and Matter
28	H	003	Life Processes and Living Systems
29	D	001	Scientific Investigation
30	J	002	Force, Motion, Energy, and Matter
31	D	004	Earth/Space Systems and Cycles
32	G	001	Scientific Investigation
33	A	001	Scientific Investigation
34	F	003	Life Processes and Living Systems
35	D	001	Scientific Investigation
36	J	002	Force, Motion, Energy, and Matter
37	C	001	Scientific Investigation
38	H	003	Life Processes and Living Systems
39	C	001	Scientific Investigation
40	J	003	Life Processes and Living Systems

Grade 5 Science, Core 1

If you get this many items correct:	Then your converted scale score is:
0	000
1	168
2	204
3	226
4	242
5	255
6	266
7	276
8	284
9	292
10	300
11	307
12	313
13	320
14	326
15	332
16	337
17	343
18	349
19	354
20	360
21	365
22	371
23	376
24	382
25	388
26	394
27	400
28	407
29	413
30	420
31	428
32	436
33	445
34	454
35	466
36	479
37	495
38	517
39	553
40	600

